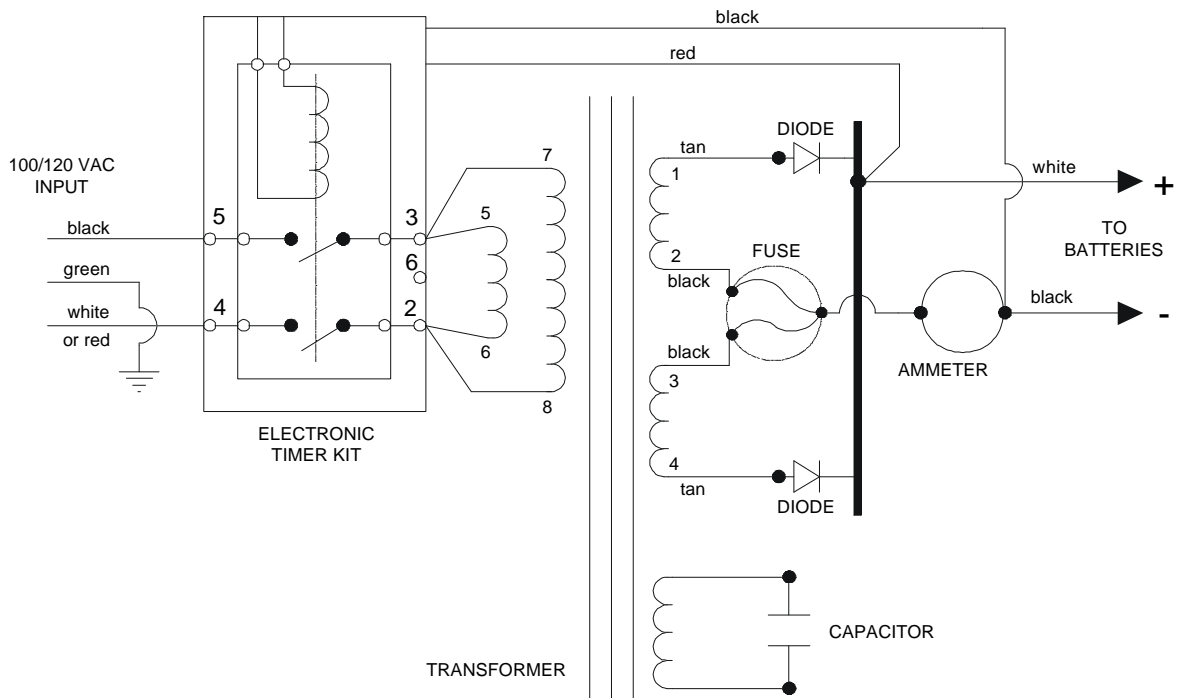


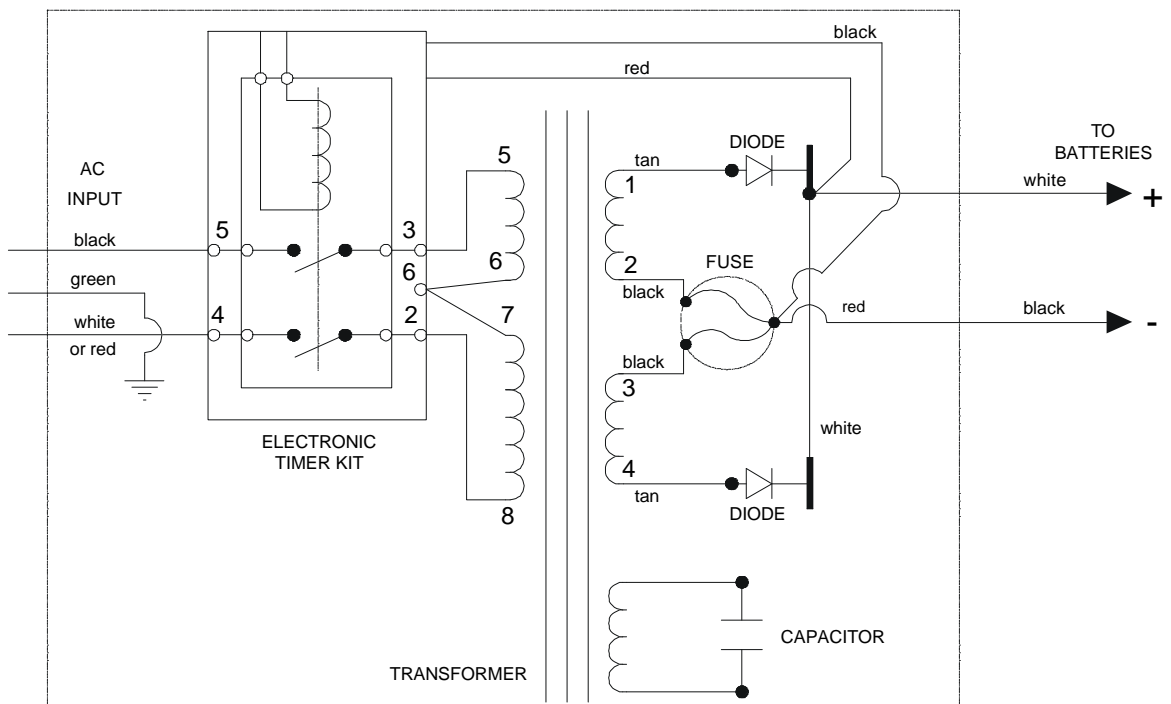
WIRING DIAGRAMS

FOR USE WITH 100-125 VAC INPUT



L2120B03

FOR USE WITH 200-250 VAC INPUT



L2200B02

**PARTS LIST FOR LESTER-MATIC CHARGER
 MODEL 11860 TYPE 36LC25-8ET
 100-125 OR 200-250 VAC / 50 HZ**

LESTER PART NO.	TAYLOR DUNN PART NO.	QTY.	DESCRIPTION
	79-749-11	1	HEATSINK ASSEMBLY, W/ DIODES
	79-745-10	2	DIODE ASSEMBLY
	79-851-00	1	AMMETER
14815S		1	ELECTRONIC TIMER ASSEMBLY
	79-902-00	1	CAPACITOR, 6.0 MFD, 660 VAC
	79-530-00	1	BUSHING, 7W-2, INSULATOR FOR HARNESS
	79-831-00	1	FUSE ASSEMBLY